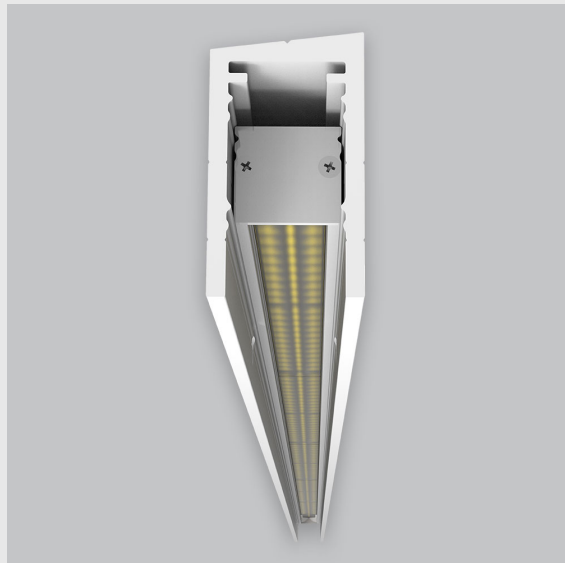


## Variant 6 - 5002-2.1.2.2.2.1.4.1.1.4.0.1.1.1



### Available Filters

1. Control = ON-OFF  
(FLICKER FREE)
2. CRI = >90
3. Lumen Type = High
4. CCT (Colour  
Temperature) = 3000K
5. Beam Angle = 0° - 15°
6. Mounting Type =  
Surface
7. Material Colour = Black
8. Dimension = 1201mm -  
2400mm
9. Distribution = Direct
10. Reflector = NA
11. Life of LED = L70  
@50,000h
12. Watt = 1W - 10W
13. SDCM = SDCM = < 3
14. Optics = Lens

P2 Vertical Wall Grazer has :

- Luminaire housing made of extruded aluminium
- Grazes walls
- Accentuates surface textures better
- Reduces hotspots and dead zones
- Custom engineered
- Precision optics provide a narrow 10° beam
- Accommodates a wide range of wall heights
- Perfect longitudinal glare reduction
- Uniform illumination
- Energy efficient LED with effective colour rendering