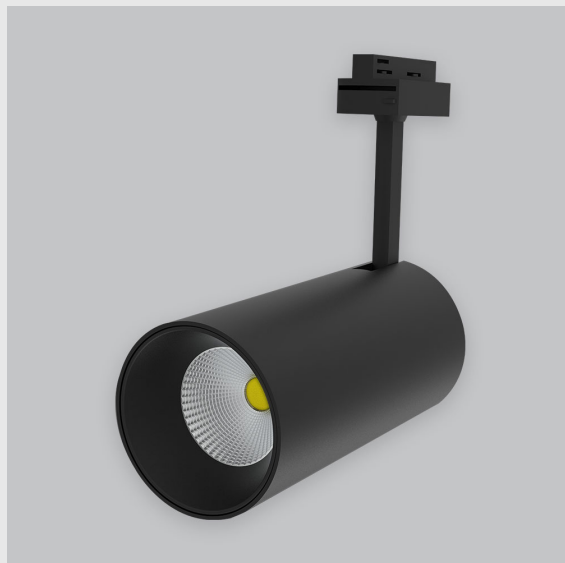


Variant 5 - 4001-2.5.1.2.0.1.0.1.1.4.0.1.1.2



Available Filters

1. Control = ON-OFF
(FLICKER FREE)
2. CRI = >80
3. Lumen Type = High
4. CCT (Colour
Temperature) = Tunable
White 2700K-6500K
5. Beam Angle = 0° - 15°
6. Material Colour = Black
7. Distribution = Direct
8. Dimension = 301mm-
600mm
9. Mounting Type = NA
10. Reflector = NA
11. Life of LED = L70
@50,000h
12. Watt = 11W - 20W
13. SDCM = SDCM = < 3
14. Optics = Lens

Phoenix Track Light has :

- Luminaire housing of die cast-aluminum
- Round recessed spotlight
- Surface powder coated
- COB (Chip on Board) technology
- Zero multiple shadows
- LED with effective colour rendering
- Overflowing colours with soft light and shadow
- Interpretation of the real environment light and colours
- Perfect longitudinal glare reduction
- Uniform light distribution
- No lateral spill for superior wall wash applications
- High colour rendering