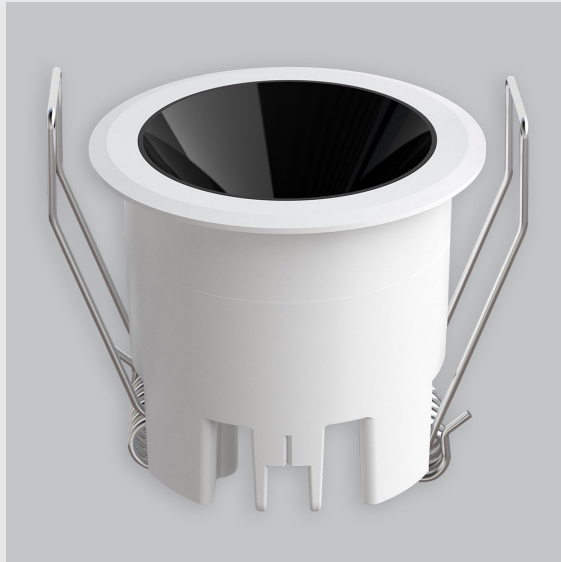


Variant 18 - 4016-2.3.2.4.3.0.1.1.1.6.0.1.1.1



Available Filters

1. Control = DALI-2 DT8
2. CRI = >90
3. Lumen Type = High
4. CCT (Colour Temperature) = 5700K
5. Beam Angle = 0° - 15°
6. Mounting Type = Recessed
7. Dimension = NA
8. Distribution = Direct
9. Material Colour = NA
10. Reflector = NA
11. Life of LED = L70 @50,000h
12. Watt = 1W - 10W
13. SDCM = SDCM = < 3
14. Optics = Lens & Reflector

Luke fixture has :

- Luminaire housing of die cast- aluminium
- Round recessed spotlight
- Surface powder coated
- COB (Chip on Board) technology
- Technology for maximum efficiency
- Zero multiple shadows
- LED with effective colour rendering
- Overflowing colours with soft light and shadow
- Interpretation of the real environment light and colors
- Finned heat sinks to dissipate heat and increase performance & lifespan
- High colour rendering