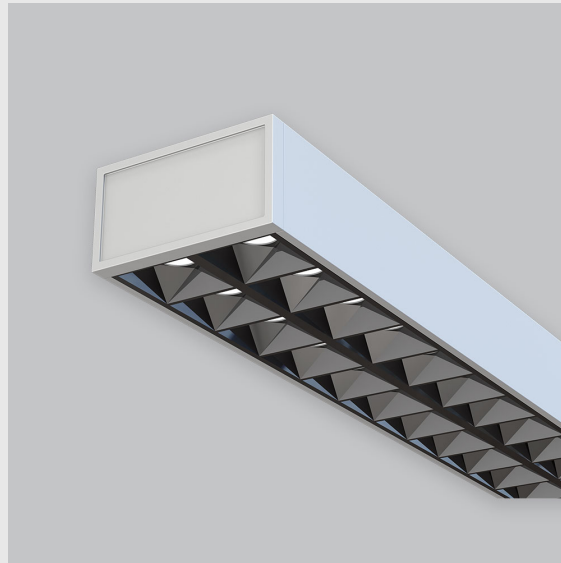


## **Variant 14 - 9001-1- 2.3.1.4.2.3.0.1.70.0.1.1.4**



### **Available Filters**

1. Control = DALI-2 DT8
2. CRI = >80
3. Lumen Type = High
4. CCT (Colour Temperature) = 5700K
5. Mounting Type = Surface
6. Material Colour = Grey
7. Distribution = Direct
8. Dimension = 301mm-600mm
9. Optics = NA
10. Reflector = NA
11. Life of LED = L70 @50,000h
12. Beam Angle = 90° - 110°
13. Watt = 31W - 40W
14. SDCM = SDCM = < 3

Leno F fixture has :

- Luminaire housing of aluminium
- Surface powder coat
- SMD (Surface Mount Device) LED technology
- Free standing luminaires
- Minimalistic design
- Numerous combinations of lamp head designs for a variety of desks