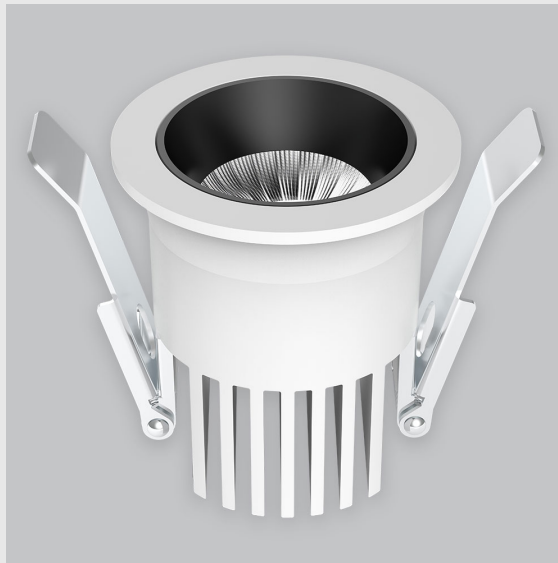


## Variant 10 - 4006-2.5.2.2.3.2.1.1.2.6.0.1.1.1



### Available Filters

1. Control = ON-OFF  
(FLICKER FREE)
2. CRI = >90
3. Lumen Type = High
4. CCT (Colour  
Temperature) = Tunable  
White 2700K-6500K
5. Mounting Type =  
Recessed
6. Material Colour = White
7. Dimension = NA
8. Distribution = Direct
9. Beam Angle = 15° - 25°
10. Reflector = NA
11. Life of LED = L70  
@50,000h
12. Watt = 1W - 10W
13. SDCM = SDCM = < 3
14. Optics = Lens &  
Reflector

Starry Sky Downlighter has:

- Luminaire housing of die cast- aluminium
- Round recessed spotlight
- Effortless installation
- Surface powder coated
- COB (Chip on Board) technology
- Technology for maximum efficiency
- Zero multiple shadows
- LED with effective colour rendering
- Lets objects show their original colours with soft light and shadow
- Interpretation of the real environment light
- Reflective cover
- Finned heat sinks to dissipate heat and increase performance